



2024 BOARD TOOLKIT

family focused, community powered

BOARD DIRECTORY

Mike Artelli, Board Chair
Realtor, Director, RE/MAX Elite &
Space Coast Association of Realtors

Rebecca Granger, Vice Chair
Chief Operating Officer,
Alliance Cyber

Dawn C. Jean, Treasurer
Tax Manager, Kaufman Rossin

Karin Jamison, Secretary
Retired, Lockheed Martin

Jim Barfield, Director
Executive Chair of the Board,
Dependable Holdings Inc.

Lucy A. Carr, Director
VP Community Consultant,
PNC Bank

Robyn Hattaway, Director
Attorney/Partner,
Lacey Lyons Rezanka

Shalarie Highsmith, Director
Sexual Assault Prevention & Response
Specialist,
Patrick Space Force Base

Doug Holton, Director
Retired, United States Air Force

Katie Garcia, Director
HR Consultant, KDG Support

Steven Johnson, Director
Vice President, Savings Safari

Lynn Jones, Director
Realtor, Results Team
Properties & Investments

Jeremy Lindquist
CEO & Financial Planner,
Sky Peak Financial

Shivani Patel, Director
Vice President of Operations,
SK Management

Kathleen Roden, Director
Finance Specialist,
Interactive Legal Services

Eric Ruoff, Director
Pastor, Georgianna Church

Karen Ruoff, Director
Director of Accounting,
Fender Guitars

BOARD PORTAL

Access the board portal by:

- Visiting www.familypromiseofbrevard.org
- Clicking board portal
- Entering password: FPOB



COMMITTEES

BOARD GOVERNANCE

Mike Artelli- Chair
Tara Pagliarini
Rebecca Granger
Karin Jamison
Doug Holton
Robyn Hattaway

CONGREGATIONAL OUTREACH

Eri Ruoff- CHair
Tara Pagliarini
Jeremy Lindquist
Shalerie Highsmith
Steve Johnson
Zach Baird
Janet Jones-Owen
Linda Graham

DEVELOPMENT

Rebecca Granger- Chair
Akili Phillips
Tara Pagliarini
Shayla Murray
Jim Barfield
Doug Holton
Karen Ruoff
Shivani Patel
Steve Johnson
Ioanna Hawkins
Bryan Stillwell

HUMAN RESOURCES

Katie Garcia- Chair
Adriana Aponte
Jennifer Cisco
Tara Pagliarini
Bill Filmore

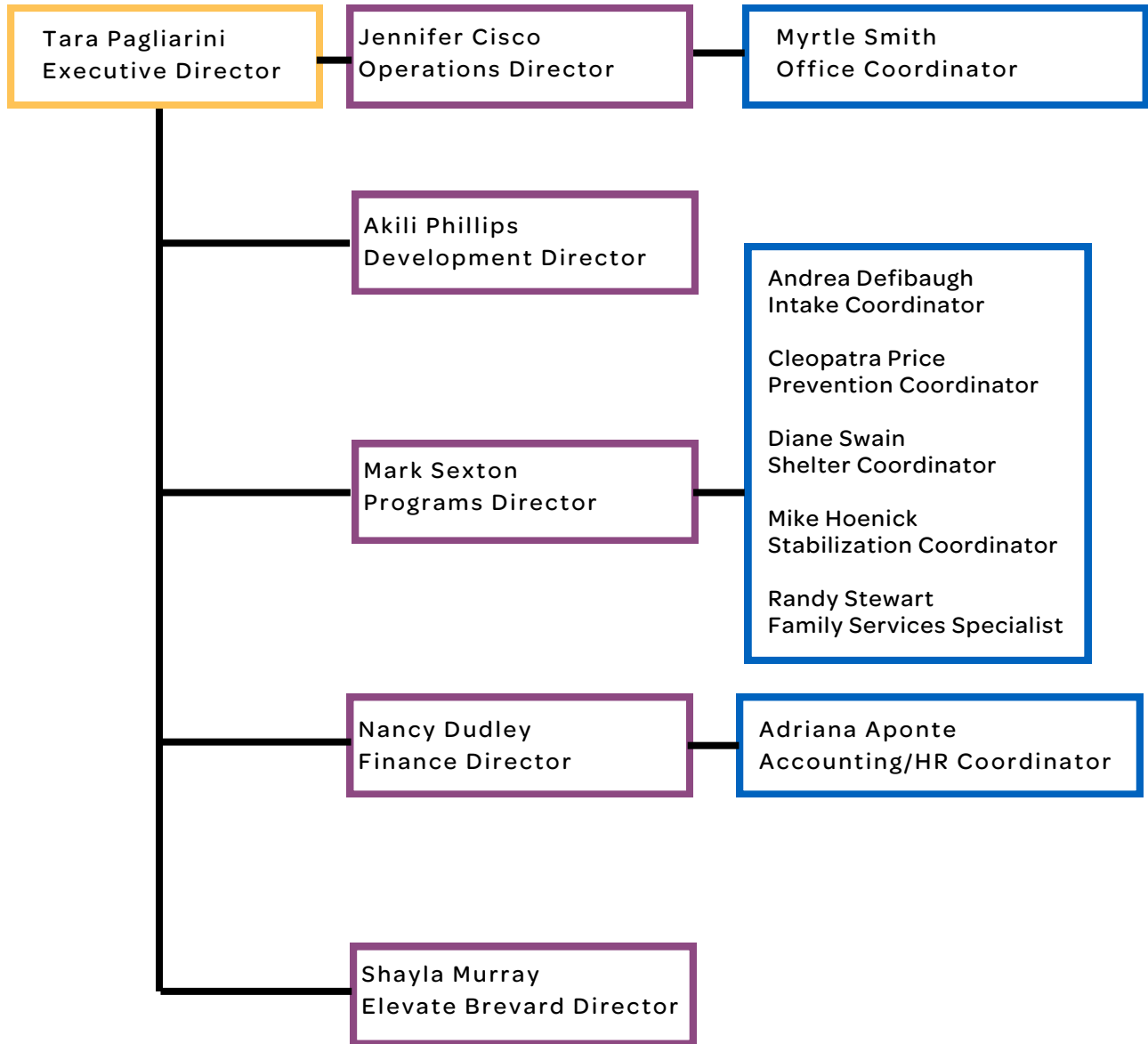
FINANCE

Karen Ruoff- Char
Nancy Dudley
Tara Pagliarini
Jennifer Cisco
Akili Phillips
Dawn Jean
Kathleen Roden
Karin Jamison
Lucy Carr
Jason Prestwood

LANDLORD ENGAGEMENT

Shivani Patel- Chair
Tara Pagliarini
Mark Sexton
Justin Chaffiot
Chelsea Burn
Alton Edmond

STAFF





ABOUT US

OVERVIEW

The Firehouse Model is a collaborative approach to combating poverty in Brevard. We initiate coordinated local efforts that bring communities together to help families experiencing homelessness regain their housing, their independence, and their dignity.

MISSION

We leverage the strengths of our community to empower and elevate families facing homelessness.

VISION

We believe every family deserves a home, a livelihood, and a chance to build a stronger future.

PROGRAMS

PREVENTION

We work to avoid the trauma of a family losing their housing by pairing financial assistance with short-term case management.

SHELTER

Our rotational shelter model engages our community to be active participants in our program by providing shelter, meals, and connection.

STABILIZATION

Programming after shelter helps families remain housed. These structured graduate programs provide continued support and reduce the risk of a family's re-entry into homelessness.



- We expect to serve 3,000 families in 2024
- We have begun raising private funds for financial assistance, “The Web”
- We are actively recruiting congregations to join as shelter hosts
- We are actively recruiting property owners to rent to families in our stabilization program

ELEVATE BREVARD

Using a collective impact approach, Elevate Brevard is focused on building systems and partnerships to assist in decreasing barriers to access, persistence, and attainment of post-secondary education and industry recognized credentials, leading to sustainable employment and a stronger workforce in Brevard County, Florida. FPOB is the backbone of Elevate Brevard.

- We would like to connect with new donors who have a passion for education who can champion Elevate Brevard



IN HOUSE PARTNERS

CHILDCARE

Early Learning Coalition

HEALTHCARE

Brevard Health Alliance

CAREER

CareerSource Brevard

FINANCIAL

Future Plan Financial

- We have space for other partners to co-locate on a once/week basis
- We are establishing ways to best share out information to the community regarding available services and classes
- We are aiming to fill the classroom and conference room calendars with more activity including meetings, workshops, etc.

2024 CALENDAR

A

APRIL

Thriving Together Issue 2

M

MAY

J

JUNE

12 - Stakeholder Meeting

12 - 2023 Impact Report

J

JULY

Annual Appeal

A

AUGUST

S

SEPTEMBER

O

Thriving Together Issue 3

Major Donor Mixer

N

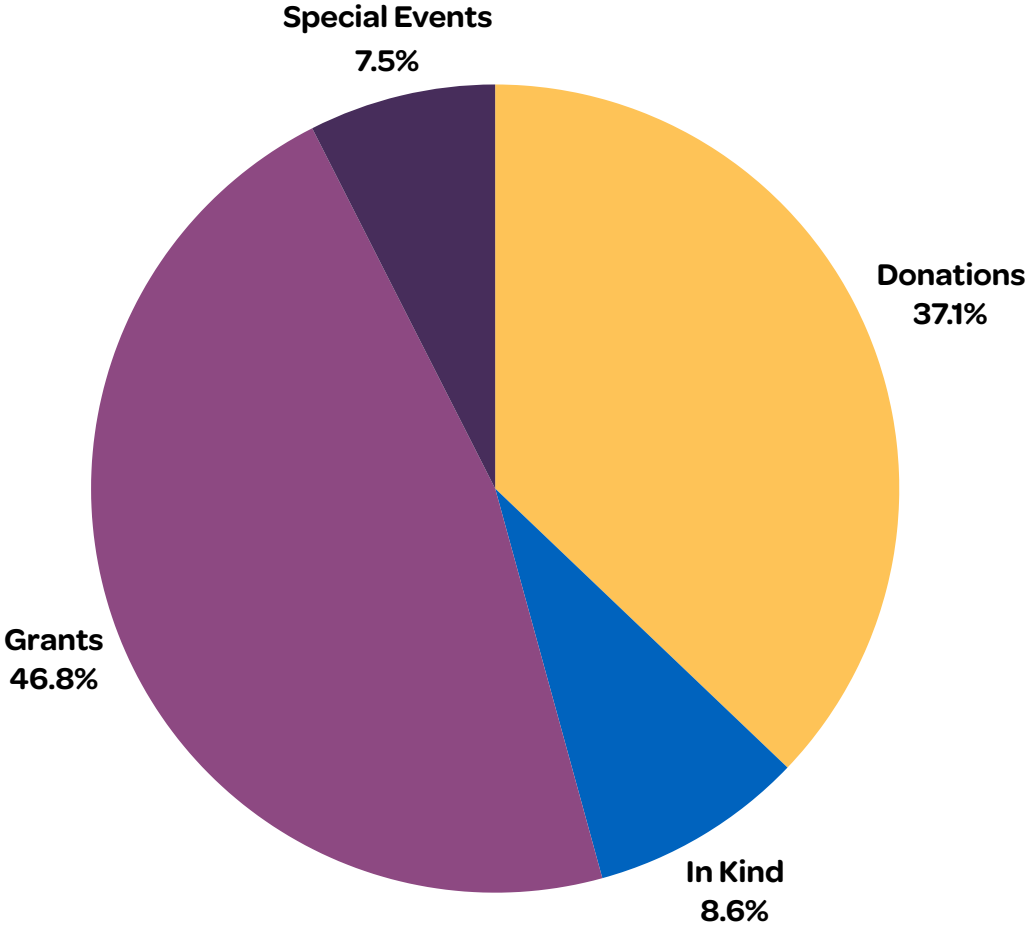
1& 2 -Hindman Wall
Golf Scramble

D

Gifts from the Heart

End of Year Appeal

ANNUAL FUNDING



CONGREGATIONS

Congregations impact our mission by providing space, support, and service to families in a housing crisis.

Name	Support
Advent Lutheran Church	shelter support, financial support
Ascension Catholic Community	host
Christ Central Church	host
Church At Viera	financial support, volunteer days
Church Of Our Saviour Cocoa Beach	host, financial support
Coastline Community Church	financial support
Elevation Church	financial support, volunteer days
Faith Viera Lutheran Church	financial support, meals
First Church Melbourne	financial support
First Presbyterian Church of Palm Bay	financial support
First United Methodist Church	host
Georgianna Church	financial support, in kind support
Grace Life Church	financial support
Grace United Methodist Church	host
Hope Lutheran Church	financial support
Merritt Island Presbyterian Church	shelter support, financial support
Pineda Presbyterian Church	financial support
Riverside Presbyterian Church	host, financial support
Saint Katherine Greek Orthodox Church	financial support
St. David's by the Sea Episcopal Church	shelter support, financial support
St. John The Evangelist Catholic Church	financial support
St. John's Episcopal Church	host, financial support
St. Mark's United Methodist Church	financial support
Suntree United Methodist Church	host, financial support
Temple Beth Sholom	financial support

TEMPLATES

ELEVATOR PITCH

Our mission is to empower and elevate families facing homelessness by leveraging the strengths of our community. Family Promise of Brevard is addressing the housing crisis in Brevard by leading a poverty prevention model in Cocoa. The Firehouse model brings housing, education, career, healthcare, and childcare services under one roof in a central location in Brevard. We've created a community hub where we can simultaneously serve families who have lost housing, who are at risk of losing housing, or who are determined to stabilize before a crisis occurs.

Our impact requires our community support on all levels. How do you envision yourself getting involved?

INVITE TO TOUR

Dear {{First Name}},

As you may know I've been on the board of Family Promise of Brevard for (insert length of time). Our mission is to elevate and empower families facing homelessness by leveraging the strengths of our community.

Since I know you (insert similarity/connection) it was important to me to connect you to our organization.

A little over a year ago, we renovated and moved into what used to be Firehouse #1 in Cocoa. We've created a community hub of services where families have access to support with housing, education, career, finances, and childcare all under one roof.

I'd love to invite you out to tour the space and meet with our Executive Director, Tara Pagliarini. I expect that once you see the space and hear our vision, you'll want to get involved!

Many thanks in advance for your consideration and I look forward to connecting soon.

INVITE TO
SPONSOR AN
EVENT

Dear {{First Name}},

As you may know I've been on the board of Family Promise of Brevard for (insert length of time). Our mission is to elevate and empower families facing homelessness by leveraging the strengths of our community.

Since I know you (insert similarity/connection) it was important to me to connect you to our organization.

We are hosting our upcoming fundraiser (insert event) on (insert date) and I wanted to see if you'd be interested in joining us as a sponsor. Our hope is that by bringing in new community partners, we can continue to expand our reach and support more families in a housing crisis.

If applicable So far, (insert prominent sponsor/entertainment/number of attendees/band/etc) have agreed to participate.

I'd love to hop on the phone and hear more about what sponsorship opportunities you might be interested in (see attached deck). If I don't hear back from you, I'll plan to follow up on (insert date).

Many thanks in advance for your consideration and I look forward to connecting soon.

(insert your name)

**INVITE TO HOST
A FUNDRAISER**

Dear {{First Name}},

As you may know I've been on the board of Family Promise of Brevard for (insert length of time). Our mission is to elevate and empower families facing homelessness by leveraging the strengths of our community.

Since I know you (insert similarity/connection) it was important to me to connect you to our organization.

We're inviting invested community members like you to share your passion for our mission with your network by hosting your own brunch, lunch, or dinner fundraiser. We'll provide the marketing materials you need for your party with a purpose.

I'd love to hop on the phone and hear your thoughts. If I don't hear back from you, I'll plan to follow up on (insert date).

**INVITE TO BECOME
A MONTHLY DONOR**

Dear {{First Name}},

As you may know I've been on the board of Family Promise of Brevard for (insert length of time). Our mission is to elevate and empower families facing homelessness by leveraging the strengths of our community.

Since I know you (insert similarity/connection) it was important to me to connect you to our organization.

As we aim to expand our network and serve more families, I'd like to invite you to consider joining me as a "Promise Partner" and making a monthly donation to Family Promise of Brevard. Ten dollars or more each month will help us impact 3,000 families this year.

Visit www.familypromiseofbrevard.org to sign up. Please feel free to reach out to me with any questions!

RESOURCES

FPOB BOARD
PORTAL

FAMILY PROMISE
NATIONAL PORTAL

FAMILY PROMISE
BOARD TRAINING

LOGOS



[Click logo to download](#)



P.O. Box 562666
Rockledge, FL 32956
www.familypromiseofbrevard.org

#FAMILYFOCUSEDCOMMUNITYPOWERED